

## **FS super-beam** *Form-Scaff's cost effective solution for long clear spans.*

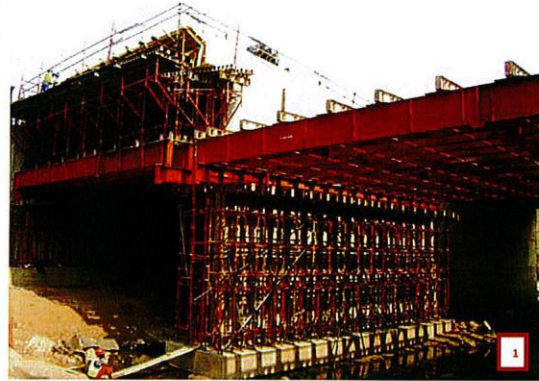
These new modular I-Beams are part of Form-Scaff's new range of heavy duty shoring products available to the construction industry on Hire or Sale. Super-Beams are available in a variety of depths and lengths to span across rivers, roadways etc.

Beams are delivered to site in pairs made up of two beams spaced apart by modular sized Transverse Beams. This simplifies transportation as well as the placing of the Beams and removal from its support structure.

"Contractors now have the option of hiring these normally very expensive items that used to be cut to size for every project" says Klaas Pouwels, Form-Scaff's Support Services Director.

More than 18 Bridge structures have been successfully completed over the last 18 months with this new system - many of them part of SANRAL's new Gauteng Freeway Improvement Program (GFIP).

These include: N14 / R512 Bridge ( Cover Page )  
Malibongwe Drive / N1Bridge  
Klein Jukskei Bridge  
R21 / N12 Bridge  
Blackburn Bridge - N2



Two Railway stations in Durban as well as a few temporary pedestrian bridges around the country were also successfully completed using these modular beams.

Other Form-Scaff products in the range of new heavy duty shoring include the 1000kN Super-Shore as well as the 80kN Super-Stage system (a Kwik-Stage based heavy duty Supportwork system that features a new fast and easy Bracing system)



1. *Klein Jukskei Bridge – Rivonia*
2. *Pedestrian Bridge – Durban*
3. *Blackburn Bridge - Umhlanga*

For more information on these and any other Formwork and Scaffolding products and services, please visit the Form-Scaff Website on [www.formscuff.com](http://www.formscuff.com)